

- Purlins, Sheeting Rails and Eaves Beams rolled to order
- Mezzanine Floor Components
- Surebuild light gauge steel framing and structural walls
- Modular Building Components
- Laser Cutting, Punching and Notching
- Pre-Galvanised profiles up to 6mm thickness and 500mm in depth
- Grain and Bulk Storage Panels
- Bespoke Sections manufactured to clients individual requirements
- Extensive dedicated Fabrication and Paint shop Facilities

WHAT'S NEW?

**GENERAL BROCHURE**

We are in the final stages of completing the General Brochure. This will be a publication showcasing all that we can offer and our many products and services.

If you would like to be put on the mailing list for this publication, or if you require any other publications that we have available, please visit our website or contact a member of our sales team.

**BW'S DESIGN TEAM GOES FROM STRENGTH TO STRENGTH!**

As part our continuous investment programme, BW Industries have expanded our in house design services to offer complete and comprehensive design and drawing facilities including 3D modelling of projects. From conception to completion, BW have the complete package.



**About SureBUILD technology**

The material is steel, the technology is Surebuild. Lightweight, load bearing framework for all applications – industrial, commercial, modular and domestic. The Surebuild name reflects the ongoing product development, independent testing and analysis, manufacturing speed and accuracy, and overall cost effectiveness.

**Surebuild – solutions in steel**

Surebuild is a registered Trademark of BW Industries Ltd.



TEL 01262 400088 FAX 01262 401110

EMAIL sales@bw-industries.co.uk

WEB www.bw-industries.co.uk

B W INDUSTRIES LTD Carnaby Industrial Estate, Lancaster Road, Bridlington. YO15 3QY.

**Light Steel Solutions for All Applications**

A free seminar for architects, structural engineers and specifiers.

Wednesday 5th December 2012, 14:00 – 17:00

At RIBA, 66 Portland Place, London

Find out how light steel solutions can benefit your construction sector. . .

**BW Shares its Expertise!**

The SCI are holding a seminar on Light Steel Solutions with a discussion from our very own Structural Engineer, Martin Richards. He will be discussing the benefits of Light Steel Solutions, in particular with regards to the Modular Construction Industry.

To register your attendance at the event, please contact Jane Burrell –



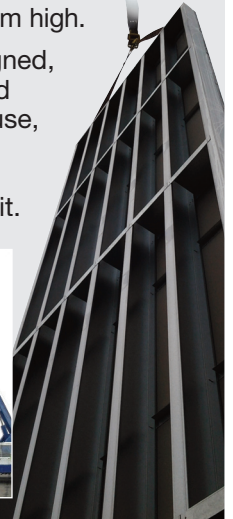
Tel: +44(0)1344 636500

Email: education@steel-sci.com

**Doors open on new opportunities!**

Following our last newsletter and the case study on the Millennium Stables in New Market, the Barn Doors on the stables that were designed and manufactured by **BW** have proved to be somewhat popular. We have since manufactured, upon request, a pair of much larger doors for another client. These were for a Salt Barn and measured a mammoth 3m wide by 10.68m high.

These were designed, manufactured and assembled in house, and delivered to the client as a complete unit.



**BW Industries design and manufacture a complete mezzanine floor for a temporary building.**

The floor is made entirely from Cold Rolled Cee sections, for both the Primary & Secondary beams, which were bolted together frame by frame. Each frame was 5000mm x 2500mm.

The Secondary beams were integrally cleated fixed with rivets to give added strength.

There are several benefits from using this system:

- 1) Easy to install
- 2) The floor can be re-used
- 3) Made from fully "pre galvanised" material

The floor sloped from ground level up to 1600mm which meant the frames had to be supported on pedestal legs to accommodate the uneven ground for which the sections were engineered to suit this application.

For more information on any of our products and services, please visit our website or contact a member of our dedicated sales team.

Email: sales@bw-industries.co.uk